

**Agilent GUI Data Logger  
Software for U1731C,  
U1732C, and U1733C  
Handheld LCR Meter**

**Quick Start Guide**



**Agilent Technologies**

# Notices

© Agilent Technologies, Inc. 2011

No part of this manual may be reproduced in any form or by any means (including electronic storage and retrieval or translation into a foreign language) without prior agreement and written consent from Agilent Technologies, Inc. as governed by United States and international copyright laws.

## Manual Part Number

U1731-90089

## Edition

First Edition, March 1, 2011

Agilent Technologies, Inc.  
5301 Stevens Creek Blvd.  
Santa Clara, CA 95051 USA

## Warranty

**The material contained in this document is provided “as is,” and is subject to change, without notice, in future editions. Further, to the maximum extent permitted by the applicable law, Agilent disclaims all warranties, either express or implied, with regard to this manual and any information contained herein, including but not limited to the implied warranties of merchantability and fitness for a particular purpose. Agilent shall not be liable for errors or for incidental or consequential damages in connection with the furnishing, use, or performance of this document or of any information contained herein. Should Agilent and the user have a separate written agreement with warranty terms covering the material in this document that conflict with these terms, the warranty terms in the separate agreement shall control.**

## Technology Licenses

The hardware and/or software described in this document are furnished under a license and may be used or copied only in accordance with the terms of such license.

## Restricted Rights Legend

U.S. Government Restricted Rights. Software and technical data rights granted to the federal government include only those rights customarily provided to end user customers. Agilent provides this customary commercial license in Software and technical data pursuant to FAR 12.211 (Technical Data) and 12.212 (Computer Software) and, for the Department of Defense, DFARS 252.227-7015 (Technical Data - Commercial Items) and DFARS 227.7202-3 (Rights in Commercial Computer Software or Computer Software Documentation).

## Safety Notices

### CAUTION

A **CAUTION** notice denotes a hazard. It calls attention to an operating procedure, practice, or the likes of that, if not correctly performed or adhered to, could result in damage to the product or loss of important data. Do not proceed beyond a **CAUTION** notice until the indicated conditions are fully understood and met.

---

### WARNING

A **WARNING** notice denotes a hazard. It calls attention to an operating procedure, practice, or the likes of that, if not correctly performed or adhered to, could result in personal injury or death. Do not proceed beyond a **WARNING** notice until the indicated conditions are fully understood and met.

---

# Table of Contents

Introduction	1
System requirements	1
Installing and Connecting the LCR Meter	2
Using the Agilent GUI Data Logger	5
Automatic - Continuous mode	6
Automatic - Up to x count mode	8
Manual mode	9
Removing the Agilent GUI Data Logger	12
Uninstalling from the Windows Start menu	12
Uninstalling from the Windows Add/Remove Programs	12

**THIS PAGE HAS BEEN INTENTIONALLY LEFT BLANK.**

# Introduction

The U1731C, U1732C, and U1733C handheld LCR meter models are equipped with a bi-directional (full duplex) communication capability that eases data storing from the LCR meter to your PC.

The required accessory for this communication capability is the U5481A IR-USB cable and the *Agilent GUI Data Logger for Agilent Handheld LCR Meter (U1730C)* application software, which is available for free on the Agilent website ([www.agilent.com/find/hhTechLib](http://www.agilent.com/find/hhTechLib)).

## NOTE

The U5481A IR-USB cable functions as a serial RS-232 port that connects the LCR meter to the USB port of your PC.

## System requirements

Before installing the Agilent GUI Data Logger application software, ensure that your PC meets the following minimum system requirements.

<b>Processors</b>	1.6 GHz Pentium <sup>®</sup> IV or higher
<b>32-bit OS platforms</b>	Windows <sup>®</sup> XP, Windows <sup>®</sup> Vista, or Windows <sup>®</sup> 7
<b>Memory</b>	512 MB or higher (recommended)
<b>Hard disk space</b>	1 GB free disk space at runtime
<b>Supported models</b>	Agilent U1731C, U1732C, and U1733C
<b>Prerequisite</b>	Microsoft .NET Framework version 3.5 <sup>[1]</sup> PL-2303 USB-Serial Driver


[1] Available with any of the following redistributable packages on the Microsoft<sup>®</sup> website:

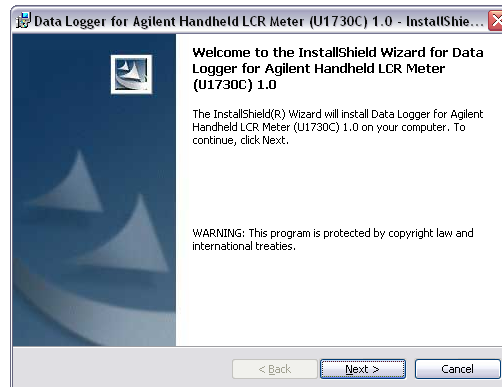
Microsoft<sup>®</sup> .NET Framework version 3.5 Redistributable Package, or  
Microsoft<sup>®</sup> .NET Framework version 4.0 Redistributable Package.

## Installing and Connecting the LCR Meter

**NOTE**

You are recommended to disconnect the U5481A IR-USB cable before installing the software.

- 1 Download the *Agilent GUI Data Logger for Agilent Handheld LCR Meter (U1730C)* application software from [www.agilent.com/find/hhTechLib](http://www.agilent.com/find/hhTechLib).
- 2 Click  to begin the installation. The required drivers and Microsoft .NET Framework are automatically installed if they are not detected on your PC.

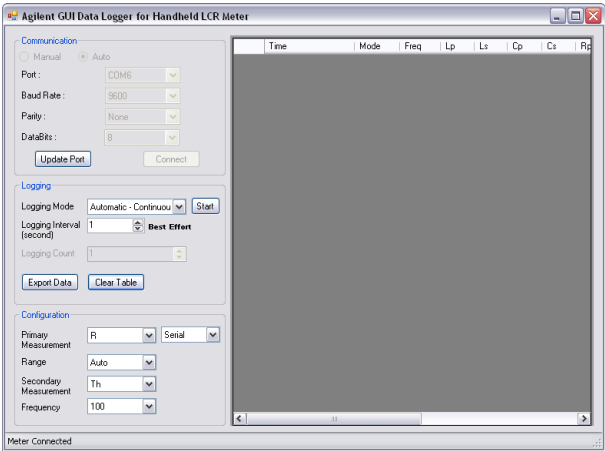


**Figure 1** Agilent GUI Data Logger InstallShield Wizard

- 3 Click **Start > All Programs > Agilent > Data Logger for Agilent Handheld LCR Meter (U1730C)** to run the Agilent GUI Data Logger. Or alternatively, you can click the Agilent GUI Data Logger shortcut icon on your desktop.

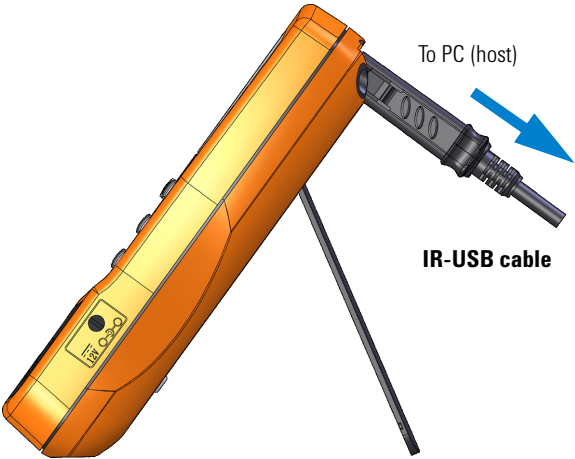


**Figure 2** Agilent GUI Data Logger shortcut icon



**Figure 3** Agilent GUI Data Logger for Handheld LCR Meter

**4** Connect the LCR meter to your PC via the U5481A IR-USB cable (Figure 4) and turn on the LCR meter.



**Figure 4** Cable connection for remote communication

**NOTE**

The U5481A IR-USB cable is an optional accessory. You can purchase the cable at your nearest Agilent Sales Office.

- 5 In the **Communication** panel, configure the LCR meter's communication settings.
  - i Select **Auto** (Figure 5) to allow the Agilent GUI Data Logger to automatically search for a connected LCR meter.
  - ii Select **Manual** (Figure 5) to manually update the Agilent GUI Data Logger's communication settings.

Select the communication Port that your LCR meter is connected to. Clicking **Update port** will update the port selections that are available on your PC.

Match the Baud Rate, Parity, and Data Bits settings (Figure 5) to the settings of the connected LCR meter.



**Figure 5** Communication panel

- 6 Click **Connect**. If the Agilent GUI Data Logger's communication settings matches with the LCR meter's communication settings, the **Meter Connected** notification will be shown in the status bar.
- 7 If the connection fails (**Meter Disconnected** notification), check that the U5481A IR-USB cable is connected securely to the LCR meter and that the LCR meter is turned on.

**NOTE**

The RS232 port is not meant for hot plugging or hot swapping. Disconnecting the U5481A IR-USB cable when it is in use will crash the Agilent GUI Data Logger.



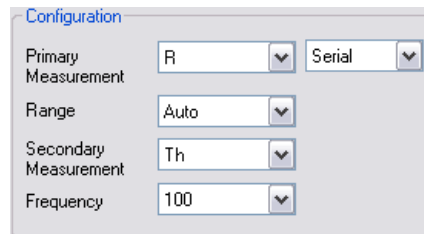
## Using the Agilent GUI Data Logger

The Agilent GUI Data Logger software is a simple graphical user interface (GUI) that allows you to perform basic controls and measurements through a PC.

The Agilent GUI Data Logger allows data to be transferred from the LCR meter to a PC via the U5481A IR-USB cable with data storing options. Three types of logging mode are available in the Agilent GUI Data Logger software:

- Automatic -Continuous
- Automatic -Up to x count
- Manual

Prior to selecting a logging mode, select the measurement configuration options from the Configuration panel.



**Figure 6** Configuration panel

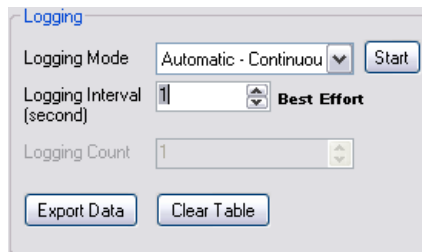
For further explanation of the measurement configuration options, refer to the *U1731C/U1732C/U1733C User's Guide*.

## Automatic - Continuous mode

The Automatic - Continuous mode allows the data to be transferred to the PC automatically and continuously with a specific log interval.

### Procedures:

- 1 In the Logging panel, select **Automatic - Continuous** in the Logging Mode drop down list.
- 2 Set the desired Logging Interval in seconds by clicking on the up/down button or by keying in the required value.



**Figure 7** Logging panel with Automatic - Continuous selected

### NOTE

- The Logging Interval is defined as the delay within the PC when it is sending a command to fetch the latest reading.
- The Logging Interval's best effort for communication between the PC and the LCR meter is subjected to the following conditions:
  - It is dependant on PC activity for USB communications.
  - It is not a true realtime-stamp.
  - It is subjected to software delays when sending commands to obtain readings.
- In this mode, the Logging Count option is disabled.

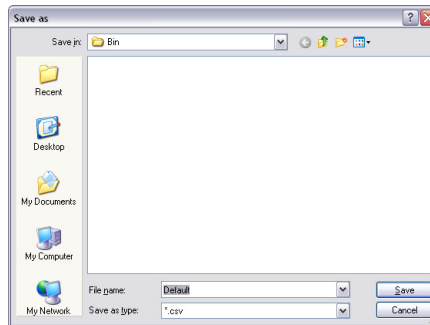
- 3 Click **Start** to start the data logging. The logged data will be displayed in the measurements table.

Time	Mode	Freq	Lp	Lt	Lp	Cp	Ca
3/29/2011 3:15:17 PM	Ra	100.0	-	-	-	-	-
3/29/2011 3:15:18 PM	Ra	100.0	-	-	-	-	-
3/29/2011 3:15:20 PM	Ra	100.0	-	-	-	-	-
3/29/2011 3:15:21 PM	Ra	100.0	-	-	-	-	-
3/29/2011 3:15:23 PM	Ra	100.0	-	-	-	-	-
3/29/2011 3:15:24 PM	Ra	100.0	-	-	-	-	-
3/29/2011 3:15:26 PM	Ra	100.0	-	-	-	-	-
3/29/2011 3:15:27 PM	Ra	100.0	-	-	-	-	-
3/29/2011 3:15:28 PM	Ra	100.0	-	-	-	-	-
3/29/2011 3:15:30 PM	Ra	100.0	-	-	-	-	-
3/29/2011 3:15:31 PM	Ra	100.0	-	-	-	-	-
3/29/2011 3:15:33 PM	Ra	100.0	-	-	-	-	-
3/29/2011 3:15:36 PM	Ra	100.0	-	-	-	-	-
3/29/2011 3:15:37 PM	Ra	100.0	-	-	-	-	-
3/29/2011 3:15:39 PM	Ra	100.0	-	-	-	-	-
3/29/2011 3:15:40 PM	Ra	100.0	-	-	-	-	-
3/29/2011 3:15:42 PM	Ra	100.0	-	-	-	-	-
3/29/2011 3:15:43 PM	Ra	100.0	-	-	-	-	-
3/29/2011 3:15:44 PM	Ra	100.0	-	-	-	-	-
3/29/2011 3:15:46 PM	Ra	100.0	-	-	-	-	-
3/29/2011 3:15:47 PM	Ra	100.0	-	-	-	-	-
3/29/2011 3:15:49 PM	Ra	100.0	-	-	-	-	-

**Figure 8** Logged data

**4** Click **Stop** to stop the data logging.

**5** Click **Export Data** to store the logged data in the PC. All the logged data shown in the measurements table will be saved as a **.csv** file.



**Figure 9** Storing the logged data in the PC

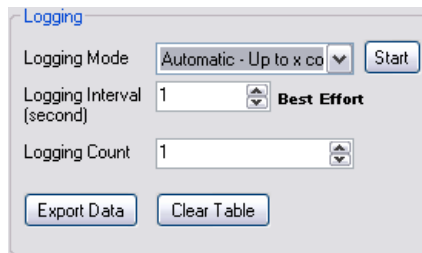
**6** Click **Clear Table** to clear all the previously logged data shown in the measurements table.

## Automatic - Up to x count mode

The Automatic-Up to x count mode allows the data to be transferred to the PC at a specific logging count and log interval set by you.

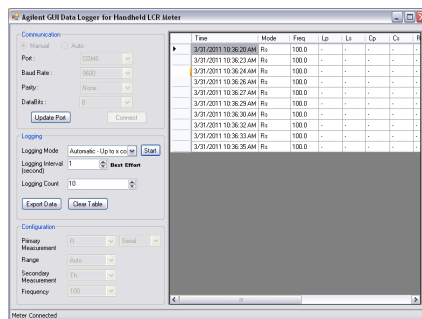
### Procedures:

- 1 In the Logging panel, select **Automatic - Up to x count mode** in the Logging Mode drop down list.
- 2 Set the desired Logging Interval in seconds and Logging Count by clicking on the up/down button or by keying in the required value.



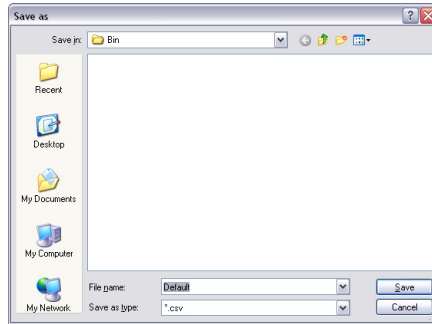
**Figure 10** Logging panel with Automatic - Up to x count selected

- 3 Click **Start** to start the data logging. The logged data will be displayed in the measurements table.



**Figure 11** Logged data

- 4 Click **Stop** to stop the data logging.
- 5 Click **Export Data** to store the logged data in the PC. All the logged data shown in the measurements table will be saved as a *.csv* file.



**Figure 12** Storing the logged data in the PC

- 6 Click **Clear Table** to clear all the previously logged data shown in the measurements table.

## Manual mode

The Manual mode allows the data to be transferred to the PC manually.

### Procedures:

- 1 In the Logging panel, select **Manual** in the Logging Mode drop down list.

### NOTE

In this mode, the Logging Interval and Logging Count option are disabled.

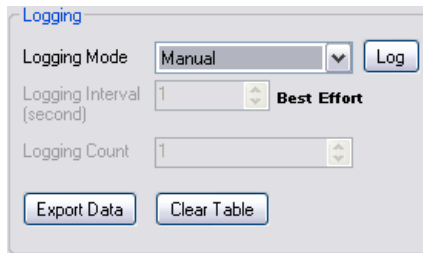


Figure 13 Logging panel with Manual selected

- 2 Click **Start** to log a single measurement. The logged data will be displayed in the measurements table.

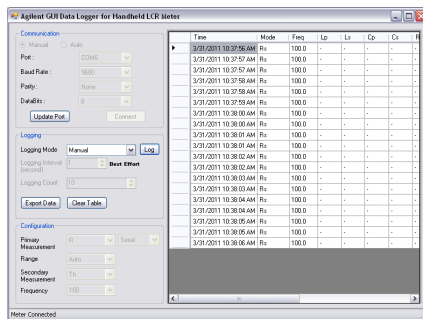
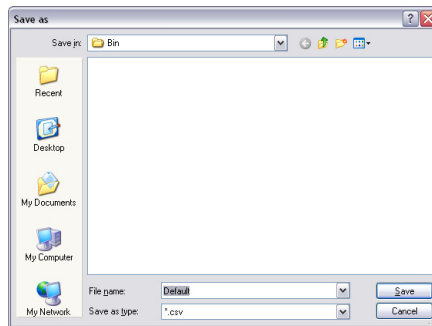


Figure 14 Logged data

- 3 Click **Export Data** to store the logged data in the PC. All the logged data shown in the measurements table will be saved as a *.csv* file.



**Figure 15** Storing the logged data in the PC

- 4 Click **Clear Table** to clear all the previously logged data shown in the measurements table.

## Removing the Agilent GUI Data Logger

The software can be removed either from the Windows Start menu or by using the Windows Add/Remove Programs.

### Uninstalling from the Windows Start menu

To remove the software from the Windows Start menu, proceed as follows:

- 1 Select **Start (Windows taskbar) > All Programs > Agilent > Uninstall Data Logger for Agilent Handheld LCR Meter (U1730C)**.



**Figure 16** Uninstall Data Logger for Agilent Handheld LCR Meter

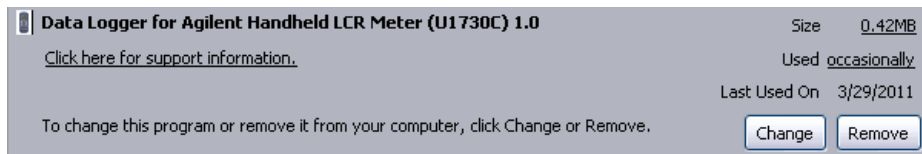
- 2 The Windows Installer dialog box will appear and prompt you to confirm the complete removal of the application.
- 3 Click **Yes** to proceed. To cancel the uninstallation, click **No**.
- 4 Follow the instructions on the screen to complete the removal process.



## Uninstalling from the Windows Add/Remove Programs

To remove the software by the Windows Add/Remove Programs, proceed as follows:

- 1 Select **Start (Windows taskbar) > Control Panel** to open the Control Panel window.
- 2 Double-click **Add or Remove Programs**. The Add or Remove Programs window will appear containing a list of currently installed programs.
- 3 Browse the list of currently installed programs to search for the **Data Logger for Agilent Handheld LCR Meter (U1730C)** as shown below.



**Figure 17** Remove Data Logger for Agilent Handheld LCR Meter

- 4 Click **Remove** to uninstall the selected application.
- 5 The **Add or Remove Programs** dialog box will appear and prompt you to confirm the complete removal of the application. Click **Yes** to proceed. To cancel the uninstallation, click **No**.
- 6 Follow the instructions on the screen to complete the removal process.

**THIS PAGE HAS BEEN INTENTIONALLY LEFT BLANK.**

**www.agilent.com**

**Contact us**

To obtain service, warranty or technical assistance, contact us at the following phone or fax numbers:

United States:

(tel) 800 829 4444 (fax) 800 829 4433

Canada:

(tel) 877 894 4414 (fax) 800 746 4866

China:

(tel) 800 810 0189 (fax) 800 820 2816

Europe:

(tel) 31 20 547 2111

Japan:

(tel) (81) 426 56 7832 (fax) (81) 426 56 7840

Korea:

(tel) (080) 769 0800 (fax) (080) 769 0900

Latin America:

(tel) (305) 269 7500

Taiwan:

(tel) 0800 047 866 (fax) 0800 286 331

Other Asia Pacific Countries:

(tel) (65) 6375 8100 (fax) (65) 6755 0042

Or visit Agilent World Wide Web at:

[www.agilent.com/find/assist](http://www.agilent.com/find/assist)

Product specifications and descriptions in this document are subject to change without notice. Always refer to Agilent Web site for the latest revision.

© Agilent Technologies, Inc., 2011

First Edition, March 1, 2011  
U1731-90089



**Agilent Technologies**